



# Washroom Collection

High Pressure Laminate | Compact Grade Laminate



Cubicles in Mountain Oak. Vanity Unit in Spring White with Spring White Speckle top.

## Cost Effective Panel Sizes

### CGL

4200mm x 1860mm  
 3660mm x 1610mm\*  
 2100mm x 1860mm\*\*

### HPL

3660mm x 1610mm\*  
 3050mm x 1300mm

A choice of sheet sizes means more cost effective projects: larger sheets result in less waste, which in turn reduces costs and has less environmental impact. Our largest size sheets allows the Abet Washroom Collection to be used to create large cubicles that comply with regulations set out in the Access to Public Buildings (2004) Disability Discrimination Act.

## Unbeatable Service

Our large size sheets offer great versatility, but for ease of handling and transportation, we also offer the cubicle manufacturer "a single cut" service on any 4200 x 1860mm compact grade sheet at any point along the length.

\* Abet CGL abstract designs available in 3660mm x 1610mm sheet size only

\*\* Allow for 24 hours additional processing time.

## Abet Washroom Collection

You can create inspired washroom interiors with two distinct Abet performance grades that on the surface appear identical.

Stylish and practical, the Abet range of decorative washroom panels features compact grade and high pressure laminates in the same surface decors and textures, so they can be used together to cost effectively fit the demands of your project. Abet Compact Grade Laminate and High Pressure Laminate have unique performance characteristics:

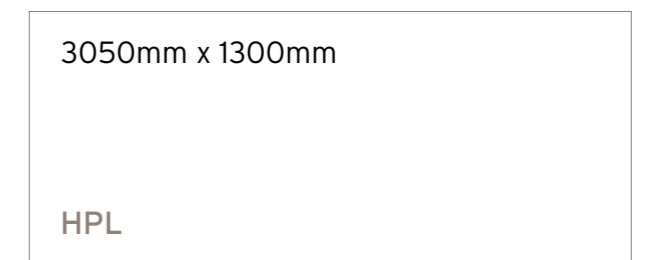
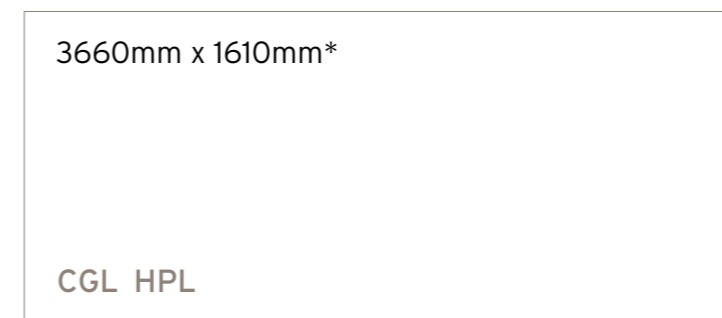
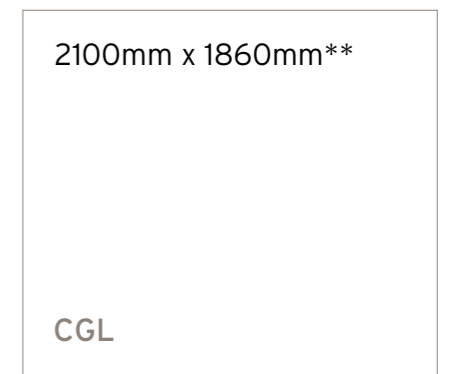
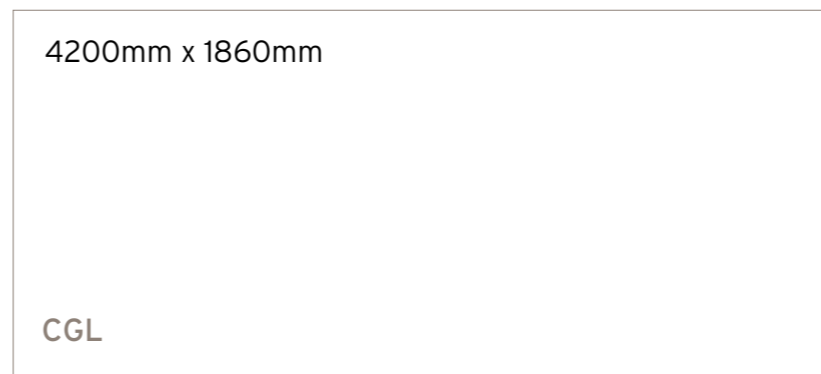
### Abet Compact Grade Laminate CGL

Abet CGL is a 12mm thick hygienic and water resistant flat panel with a very high level of tensile strength. Perfect for the toughest conditions such as very high traffic and wet areas. Each Abet CGL panel has a decorative surface on both sides and has edges that can be machined to any profile.

### Abet High Pressure Laminate HPL

Abet HPL can be bonded both sides to suitable substrates such as moisture resistant MDF to create flat panels or curved shapes with a variety of thickness. So aesthetic design flexibility becomes easy with Abet HPL and it can be used in areas with reasonably robust and wet conditions. Edges can either be seamlessly curved or finished with colour matched Dollken ABS 2mm thick edging.

Abet CGL and HPL provide all the panels needed to create stunning washrooms consisting of changing, shower and toilet cubicles, wall and plumbing panels, wash hand units and changing room lockers.



Refer to the availability chart on page 9 for more details

## Choice of Decors

CGL and HPL share the same decors and textures so can be interchanged throughout an application without compromising on quality or design continuity.

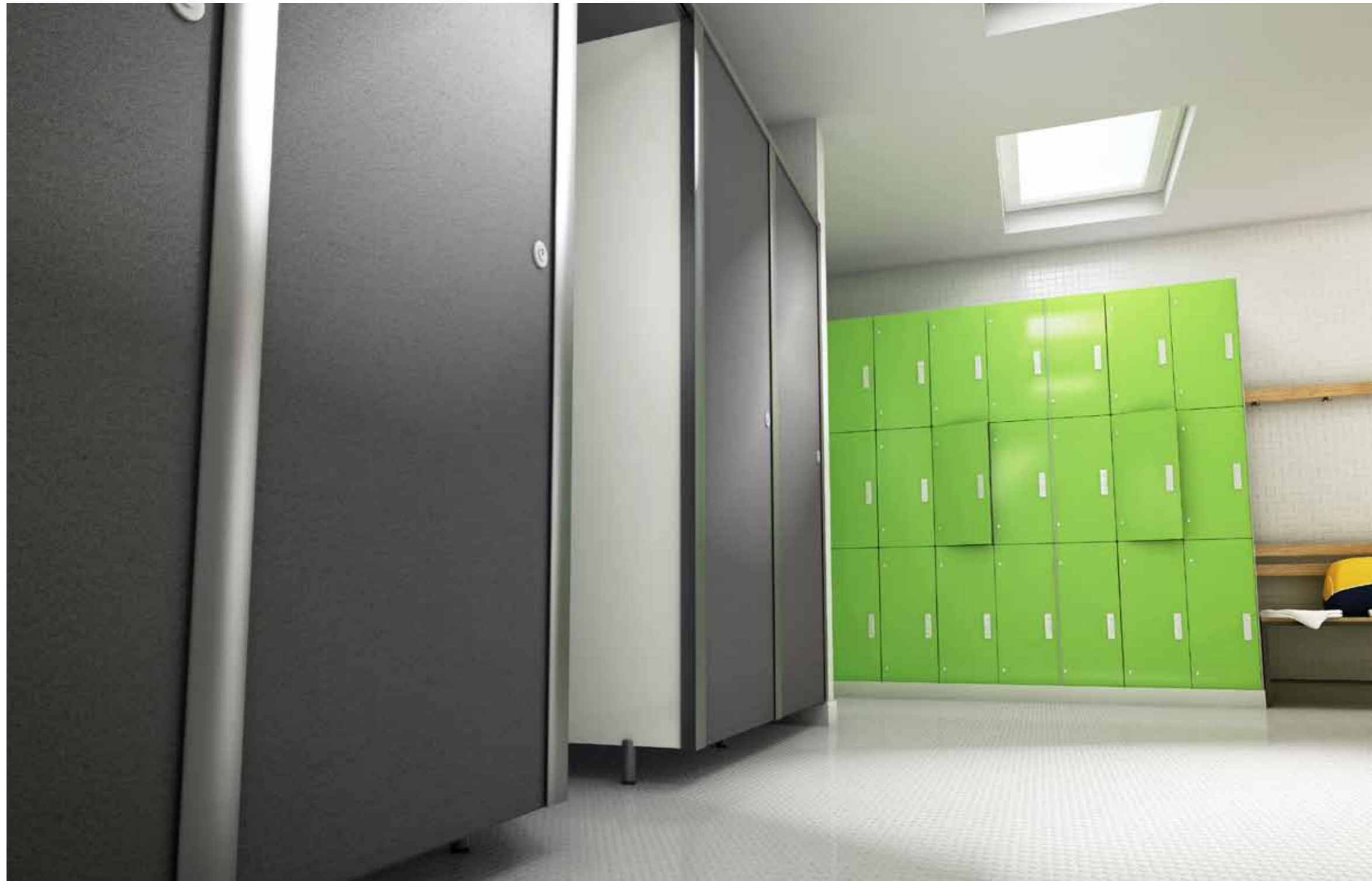
The Abet Washroom Collection offers a choice of 40 decors incorporating solid colours, abstracts and woodgrains. The solid and speckled abstract decors are colour co-ordinated to complement each other. From vibrant pinks and bold blues to gentle pastels, the Abet washroom collection offers a colour to suit all moods.

With disabled users in mind, the collection offers a number of contrasting colours to aid the partially sighted. The decor availability chart on page 9 lists the light reflective value (LRV) of each colour.

## Decor Finish Options

**Finish Six** has a smooth, semi matt surface which is both hygienic and very easy to clean.

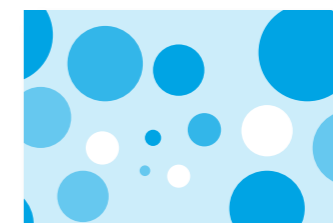
**Finish Mandarin** is a deeper textured surface which gives an embossed semi - metallic effect to the abstract designs. It is a tough, impact resistant surface which is both hygienic and easy to clean.



Cubicles in Light Grey Minimi. Lockers in Green Grass.

## Digital Print

In addition to the 40 decors available ex-stock, Abet can produce bespoke images printed onto laminate using a digital printing process. Digital print offers the opportunity to reproduce photographic images, specific patterns or even company logos directly into the laminate for outstanding and highly personalised effects.





## Solid Colour Co-ordination Options

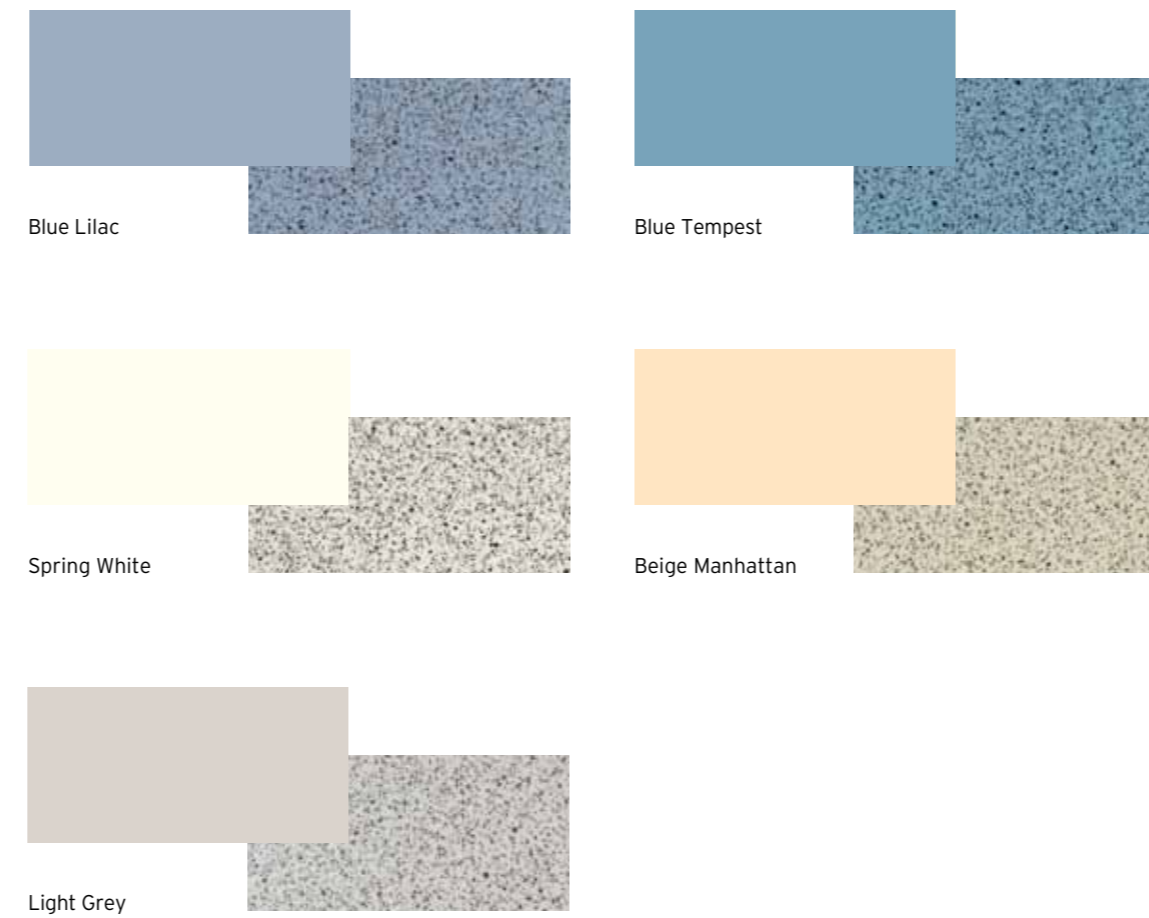


## Abstract Options

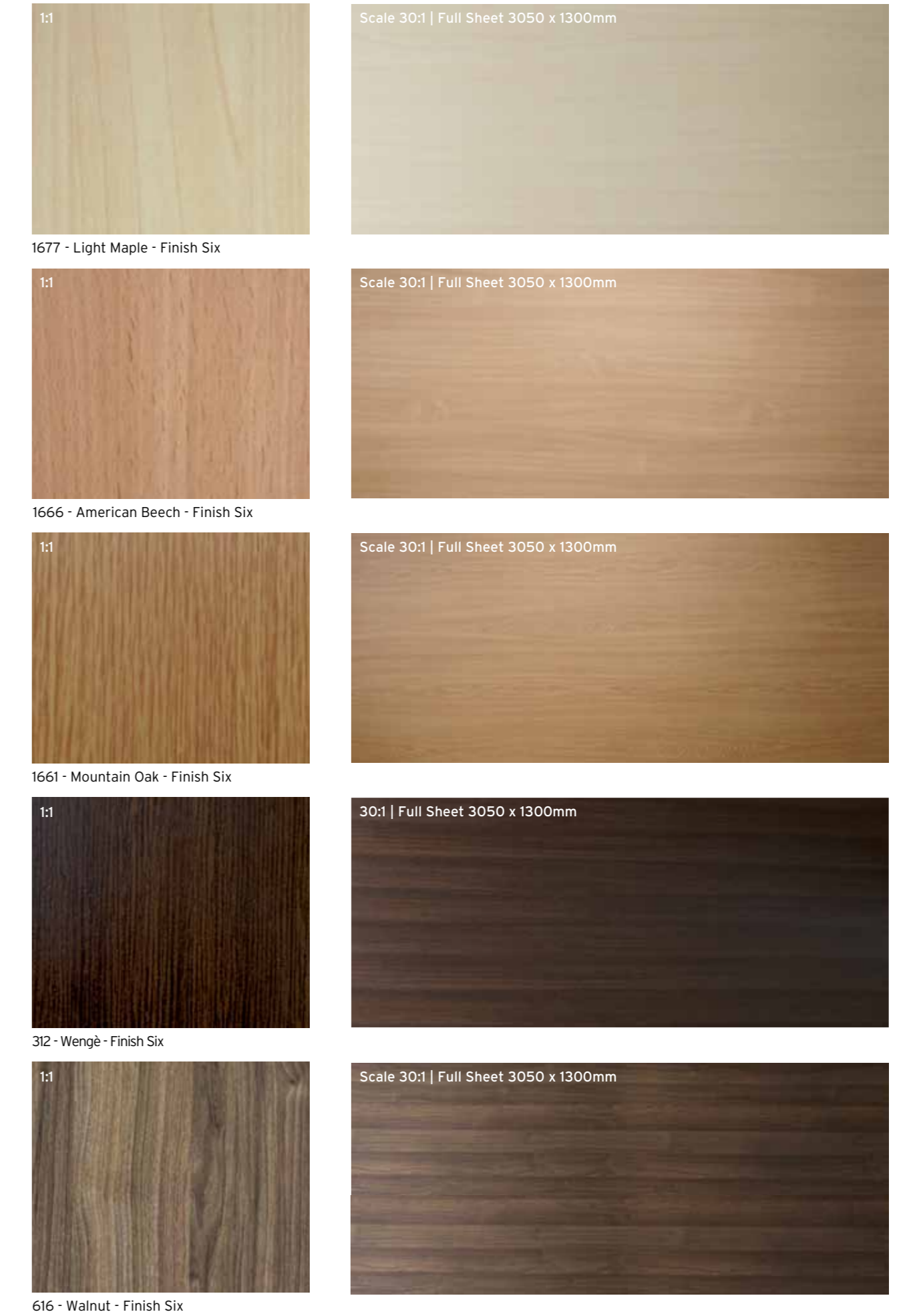


## Abstract Design and Solid Colour Co-ordination

The background solid colour of each of the speckled designs is exactly the same as the associated solid colour.



## Woodgrain Options



## Decor Availability

Ref	Name	Finish	CGL	CGL	CGL +	HPL	Dollken* LRV	NCS
			4200 x 1860mm	2100 x 1860mm	HPL	HPL		
			3660 x 1610mm	3050 x 1300mm				
<b>Solid Colours</b>								
406	Spring White	Six	•	•	•	•	82	0602-G83Y
409	Cream	Six	•	•	•	•	66	1202-Y46R
410	Ice White	Six	•	•	•	•	79	0702-G06Y
421	Black	Six	•	•	•	•	4	8402-R85B
425	Lilac Erica	Six	•	•	•	•	48	1431-R52B
427	Fuschia	Six	•	•	•	•	18	1959-R24B
431	Red	Six	•	•	•	•	15	2364-Y95R
441	Green Citron	Six	•	•	•	•	61	0933-G56Y
454	Caribbean Green	Six	•	•	•	•	64	1116-G06Y
460	Green Grass	Six	•	•	•	•	41	1359-G34Y
475	Pearl Grey	Six	•	•	•	•	45	2602-B01G
478	Light Grey	Six	•	•	•	•	50	2101-Y05R
486	Blue Lake	Six	•	•	•	•	43	1929-B59G
487	Blue Dust	Six	•	•	•	•	65	0914-R96B
499	California Blue	Six	•	•	•	•	29	1754-R98B
801	Blue Tempest	Six	•	•	•	•	34	2427-R89B
810	Mini White	Six	•	•	•	•	75	0704-Y22R
813	Beige Manhattan	Six	•	•	•	•	66	1108-Y30R
823	Tango Red	Six	•	•	•	•	17	1077-Y86R
857	Heavenly Blue	Six	•	•	•	•	61	0725-B08G
858	Blue Lilac	Six	•	•	•	•	48	1819-R81B
859	Blue Pottery	Six	•	•	•	•	8	4544-R84B
860	Yellow Piper	Six	•	•	•	•	46	1171-Y14R
861	Orange	Six	•	•	•	•	42	0760-Y45R
870	Grey Cloud	Six	•	•	•	•	26	4201-R85B
871	Dark Grey	Six	•	•	•	•	22	5301-R95B
879	Graphite Grey	Six	•	•	•	•	9	7302-R67B
<b>Woodgrains</b>								
312	Wenge	Six	•	•	•	•	8	n/a
616	Walnut	Six	•	•	•	•	16	n/a
1661	Mountain Oak	Six	•	•	•	•	33	n/a
1666	American Beech	Six	•	•	•	•	39	n/a
1677	Light Maple	Six	•	•	•	•	62	n/a
<b>Abstracts</b>								
236	Spring White Speckle	Six			•	•	60	n/a
563	Mid Grey Minimi	Mandarin			•	•	14	n/a
567	Light Grey Minimi	Mandarin			•	•	28	n/a
568	Silver Minimi	Mandarin			•	•	37	n/a
9434	Beige Manhattan Speckle	Six			•	•	43	n/a
9947	Light Grey Speckle	Six			•	•	43	n/a
9949	Blue Tempest Speckle	Six			•	•	28	n/a
9950	Blue Lilac Speckle	Six			•	•	28	n/a

All decors are protective coated (both sides on CGL panels) except 563, 567 and 568 which are heavily textured.

### \* Dollken

Dollken edging is available for each Abet Laminati decor.

Half length 2100mm x 1860mm sheet size requires 24 hour processing and are not available on next day delivery orders.





Vanity Unit in Blue Lake.

## Cleaning and maintenance

ABET LAMINATI decorative HPL and CGL require minimal maintenance under normal use and will give years of excellent service provided a few simple guidelines are followed:

Light dirt or stains can be removed easily with warm water and mild detergent. Stubborn marks should be removed using a non-abrasive cream cleaner or mild domestic bleach. Harsh abrasives or scouring powders should be avoided. Grease marks and graffiti can be removed using a standard organic solvent (e.g. acetone) without any effect on panel colour.

## Specifications

### Abet HPL + CGL

Both are constructed from multiple layers of high quality kraft papers reinforced by thermosetting resins under high pressure and temperature and melamine impregnated decorative surface papers.

### CGL

4200mm x 1860mm and 3660mm x 1610mm sheet size options  
 Strong, solid grade panels for the toughest environments  
 Exceeding the requirements of BS EN 438  
 Both sides of all panels have a protective coating film\*  
 Water resistant - perfect for washrooms  
 Black edge can be machined to any profile  
 All CGL plain colour, woodgrain and abstract designs colour match HPL panels  
 Complies with Disability Discrimination Act (DDA)

### HPL

3660mm x 1610mm and 3050mm x 1300mm sheet size options  
 Postforming grade panels for seamless curved shapes  
 Exceeding the requirements of BS EN 438  
 All designs have a protective coating film\*  
 A choice of core material grades and thicknesses  
 Panels can be edge sealed with colour matched Dollken ABS  
 All HPL plain colour, woodgrain and abstract designs colour match CGL panels

\*Designs 563, 567 and 568 are not coated as the Mandarin texture provides additional protection

Relevant NBS Clauses:

K13 Rigid Sheet fine linings/panels, K30 Panel Partitions, K32 Panel Cubicles, L20 Doors, N10 General Fixtures & Fittings

Access to Public Buildings Disability Discrimination Act (2004)  
 Washroom specifications are affected by the Access to Public Buildings (2004) DDA in two particular areas:

### Cubicle dimensions for the disabled

The Abet range is available in large sheet sizes to facilitate compliance with the Disability Discrimination Act which specifies that there should be at least a 450mm gap between and in-swinging toilet cubicle door and the adjacent toilet pan.

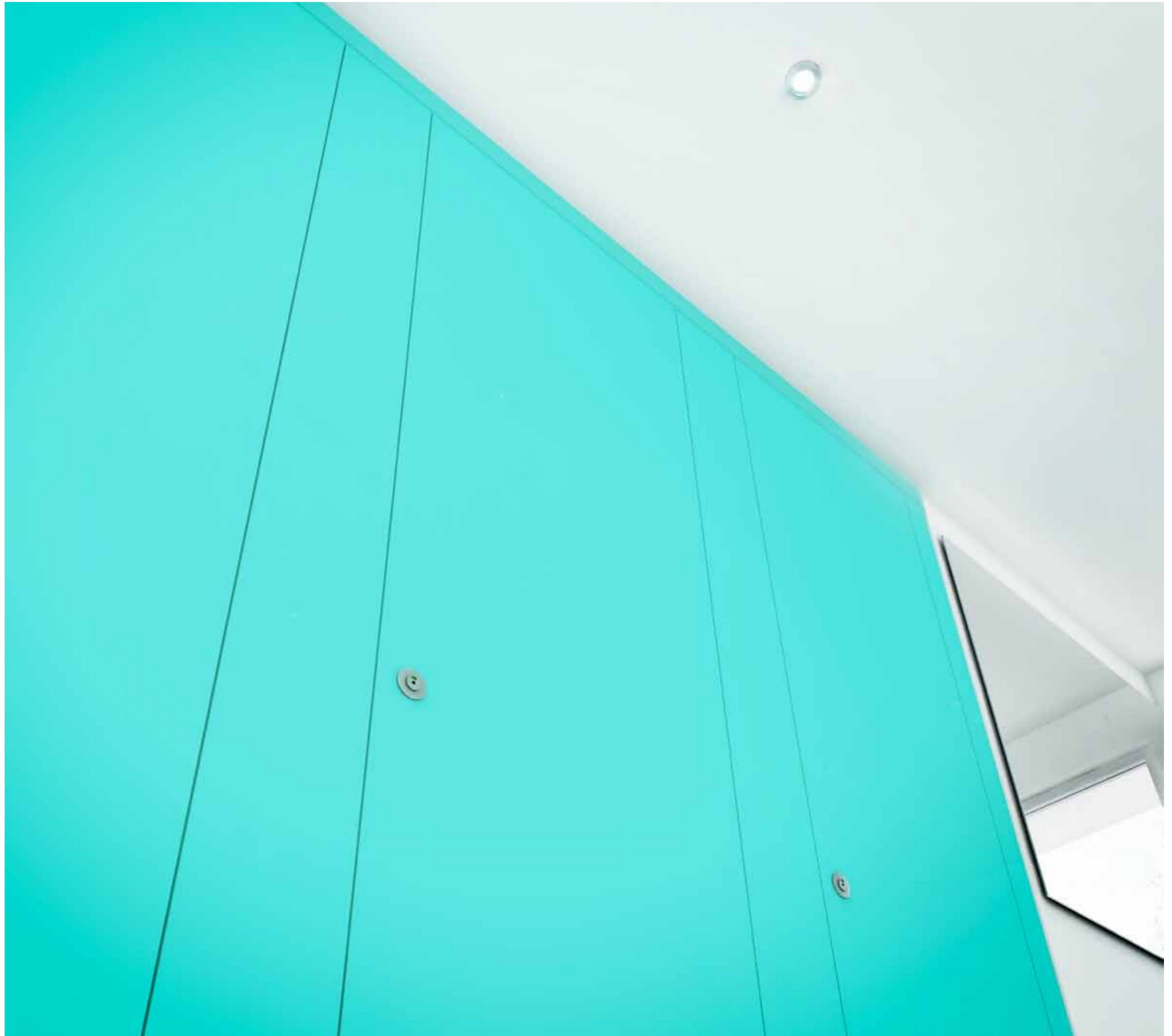
### Visual awareness

To assist the partially sighted there should be a visual contrast between adjacent surfaces in the washroom. This is measured by the Light Reflective Value (LRV) of colours, as shown on the Abet decor availability chart on page 9. For example, Black has an LRV of 4 and Spring White is 82. To ensure adjacent surfaces such as doors and pilasters are easily detected, the Act specifies that there should be a visual contrast of more than 30 LRV points between the two surfaces.

## Abet and the Environment

ABET LAMINATI research concentrates on minimising the environmental impact of its products. No Abet HPL or CGL grade product contains asbestos, lead or other heavy metal and décor papers are manufactured only using clean pigments. All paper used in the production of Abet HPL and CGL is obtained exclusively from renewable sources. The ABET LAMINATI policy is to continually assess the environmental impact of its products and production and work towards reducing any environmentally negative aspect.

Abet holds the coveted ISO 14001 certification - an internationally recognised certificate for evaluating how well an organisation manages its environmental responsibilities.



ABET LAMINATI is the largest manufacturer of decorative laminate panel products in Europe with a daily production capacity in excess of 220,000m<sup>2</sup>. Based in the Piedmont region of Italy, the company has always given prominence to the relationship between design and culture. Over the years ABET LAMINATI has worked with top designers such as Mario Bellini, Karim Rashid and many others. Thanks to these collaborations ABET LAMINATI has contributed to the development of Italian design.

Whilst every effort has been made to ensure that the colours shown in this brochure are accurately represented, we are unable to guarantee an exact match due to the limitations of the brochure printing process.

ABET LAMINATI has a policy of continuous development. We therefore reserve the right to amend product specifications without notice. All sizes shown are nominal. E&OE.

UK Distribution centre for the products shown in this brochure:



**Blackheath Products Ltd**

Units 2-4 Fairfield Park  
Halesowen  
West Midlands  
B62 9JL

Telephone: 0121 561 3939  
Fax: 0800 634 0114  
email: [sales@abet.uk.com](mailto:sales@abet.uk.com)  
[www.abet.uk.com](http://www.abet.uk.com)