

WASHROOMS  
**INTERIOR PANELS**



**Think Trespa**

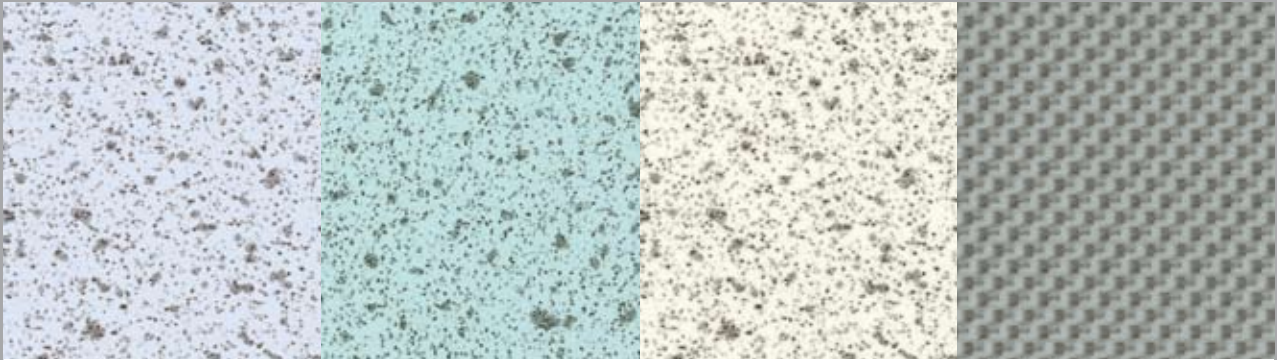
TRESPA®

# TRESPA ATHLON COMPACT LAMINATE (COMPACT) TRESPA ATHLON HIGH-PRESSURE DECORATIVE LAMINATE (HPL)

## Uni colours

			
E 17-30 Heaven Blue	E 25-01 Icey Blue	E 0-00 White	E 5-11 Soft Pink
			
E 17-32 Powder Blue	E 19-11 Light Blue	E 0-015 Pastel Grey	E 2-31 Melon Yellow
			
E 25-04 Steel Blue	E 23-21 Pastel Green	E 3-01 Sand	E 3-42 Gold Yellow
			
E 17-52 Aqua Blue	E 20-12 Aquamarine	E 0-02 Silver Grey	E 7-62 Poppy Red

# Fantasy

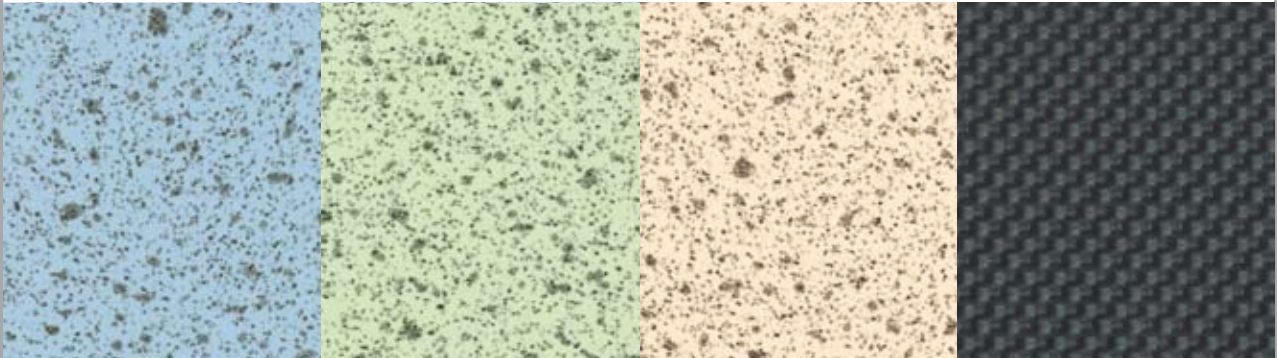


S 25-01 Speckle Icy Blue

S 19-11 Speckle Light Blue

S 0-00 Speckle White

MC-1 Micro Grey

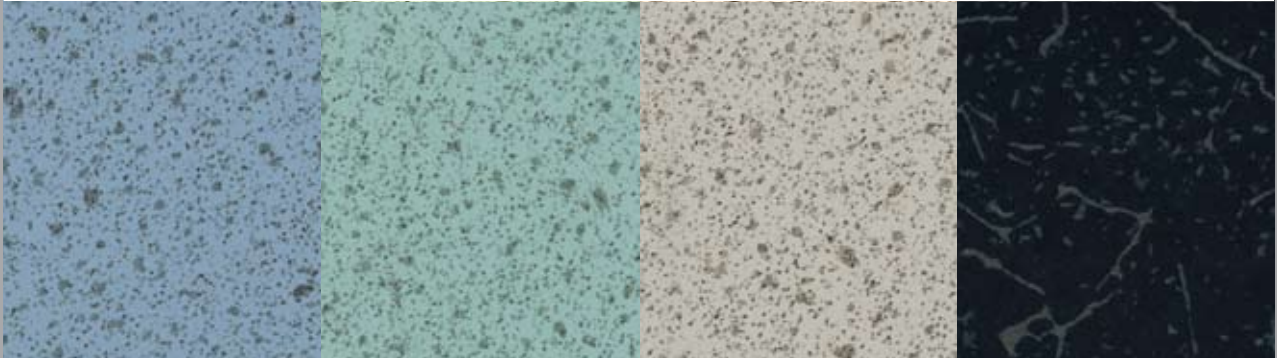


S 17-30 Speckle Heaven Blue

S 23-21 Speckle Pastel Green

S 3-01 Speckle Sand

MC-2 Micro Black



S 17-32 Speckle Powder Blue

S 20-12 Speckle Aquamarine

S 0-02 Speckle Silver Grey

C0-09 Black Craquele



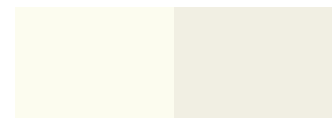
CB-3 Cyber Blue

# MELAMINE FACED CHIPBOARD (MFC)

## Wood Decors



The colours in this document are printed, and therefore, may vary slightly from the original Trespa panel colours with respect to gloss, colour shades and surface texture. Original samples are available on request.



E 0-00  
White

E 0-015  
Pastel Grey



E 3-01  
Sand

E 0-02  
Silver Grey



E 17-30  
Heaven Blue

E 17-32  
Powder Blue



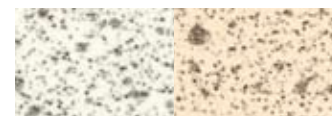
E 17-52  
Aqua Blue

E 20-12  
Aquamarine



E 7-62  
Poppy Red

E 3-42  
Gold Yellow



S 0-00  
Speckle White

S 3-01  
Speckle Sand



S 0-02  
Speckle Silver Grey

S 20-12  
Speckle Aquamarine



S 17-32  
Speckle Powder Blue



Melamine Faced Chipboard (MFC),  
with Trespa Athlon matching decorative  
surface, produced by Saréco

# INTERIOR PANELS

## Trespa Athlon Compact laminate (Compact)

Trespa Athlon Compact laminate is a flat panel based on thermosetting resins, homogenously reinforced with wood based fibres and manufactured under high pressure and temperature with an integrated decorative surface. The panels are designed for demanding interior applications.



Trespa Athlon Compact panel is extremely scratch and wear resistant and not adversely affected by moisture. The combination of a solid, homogenous core with a hard surface based on melamine resins gives Trespa Athlon exceptional impact resistance.

Trespa Athlon is heat resistant. Due to the high density, Trespa Athlon ignites at relatively high temperature and carbonises in a way similar to hardwood. In a fire, the panel material does not melt, drip or explode and retains its stability for a long period of time.

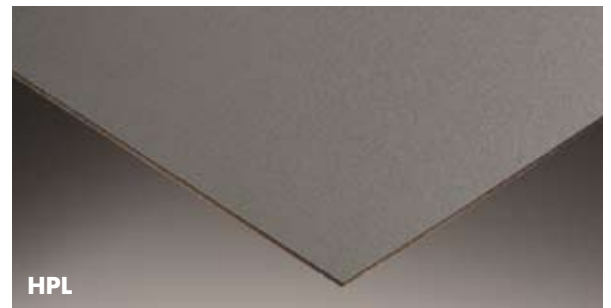
Panels are easy to keep clean and as they do not absorb or retain moisture. They can be cleaned frequently, using standard non-abrasive cleaning agents and certain disinfectants. Standard tungsten carbide tipped tools for hardwood can be used for any kind of processing such as sawing, drilling and routing.

TRESPA®

## Trespa Athlon High-pressure decorative laminate (HPL)

Trespa Athlon High-pressure decorative laminates are available in 0,8 mm thickness for greater design flexibility. The panels are manufactured by Arpa to the same surface performance as Trespa Athlon compact laminates and are available in the same range of colours to offer complete versatility and only available through Trespa UK Distributors. They blend in perfectly with other Trespa products. Trespa Athlon High-pressure decorative laminate can be used flat or curved and be fixed to other surfaces to make stunning interior designs.

Arpa 



## Melamine Faced Chipboard (MFC)

Melamine faced chipboard is a double sided decorative composite panel with a moisture resistant core produced by the company Saréco, available in a number of decors that coordinate to the Trespa Athlon compact grade and high pressure laminate collection. These lightweight boards are especially suited for vertical applications in interior where aesthetics are a high priority and the characteristics of chipboard fit the application.

SARÉCO®



### Trespa International B.V.

Trespa International B.V. specialises in high quality panel material for façade cladding and interior use. Trespa has both the expertise and the means to develop products for specific segments of the market. Trespa is continually looking for ways to protect the environment even more effectively.

Trespa guarantees quality of both products and services. We offer our customers optimal technical support as well as straightforward documentation. Proof of this approach is the award of the ISO 9001 and ISO 14001 certificates.



Whatever your requirements, Trespa offers a full support service. Please contact us for further information.

### Conditions of Sale

To all our offers, quotations, sales, deliveries and supplies and/or agreements, and to all related services and activities the Trespa

International B.V. General Conditions of Sale apply, filed at the Venlo Chamber of Commerce on 11 April 2007, registered under number 24270677, and appearing on the website at [www.trespa.com](http://www.trespa.com). The text of these General Terms and Conditions will be sent to you upon request.

### Responsibility

We believe all information in this publication to be correct at the time of printing. It is intended as information concerning our products and their application possibilities and is therefore, not intended as any form of guarantee with regard to any specific product characteristic.

### Colours

The colours in this document are printed, and therefore, may vary slightly from the original Trespa panel colours with respect to gloss, colour shades and surface texture. Original samples are available on request.

### Registered trademarks

© Trespa, Meteon, Athlon, TopLab, TopLab<sup>PLUS</sup>, TopLab<sup>ECCO-FIBRE</sup>, Virtuon,

Volkern, Trespa Essentials and Mystic Metallics are registered trademarks of Trespa International B.V.

### Copyrights

© All rights reserved. No part of this publication may be reproduced, stored in a retrieval system, or made public, in any form or by any means, either graphic, electronic or mechanical, including photocopying, recording or otherwise, without the prior written permission of Trespa International B.V.

[www.trespa.com](http://www.trespa.com)



OLV Gasthuis, Belgium

### Trespa UK Ltd

Grosvenor House  
Hollinswood Road  
Central Park, Telford  
Shropshire, TF2 9TW  
Tel.: +44 (0) 1952 290707  
Fax: +44 (0) 1952 290101  
[info@trespa.co.uk](mailto:info@trespa.co.uk)

### Trespa International B.V.

P.O. Box 110, 6000 AC Weert  
Wetering 20, 6002 SM Weert  
The Netherlands  
[www.trespa.com](http://www.trespa.com)

### Customer service Desk EMEA Export

Tel.: +31 (0) 495 458 359 / 573  
Fax: +31 (0) 495 458 383  
[infoexport@trespa.com](mailto:infoexport@trespa.com)



Swimmingpool (Piscine), France

Your Trespa distributor:



code U4851  
version 09-2010 copies 3.000

[www.trespa.com](http://www.trespa.com)